

CUSTOMER SERVICE COUNTER ELEVATION

1
NOT TO SCALE

SHIPPING/RECEIVING COUNTER ELEVATION

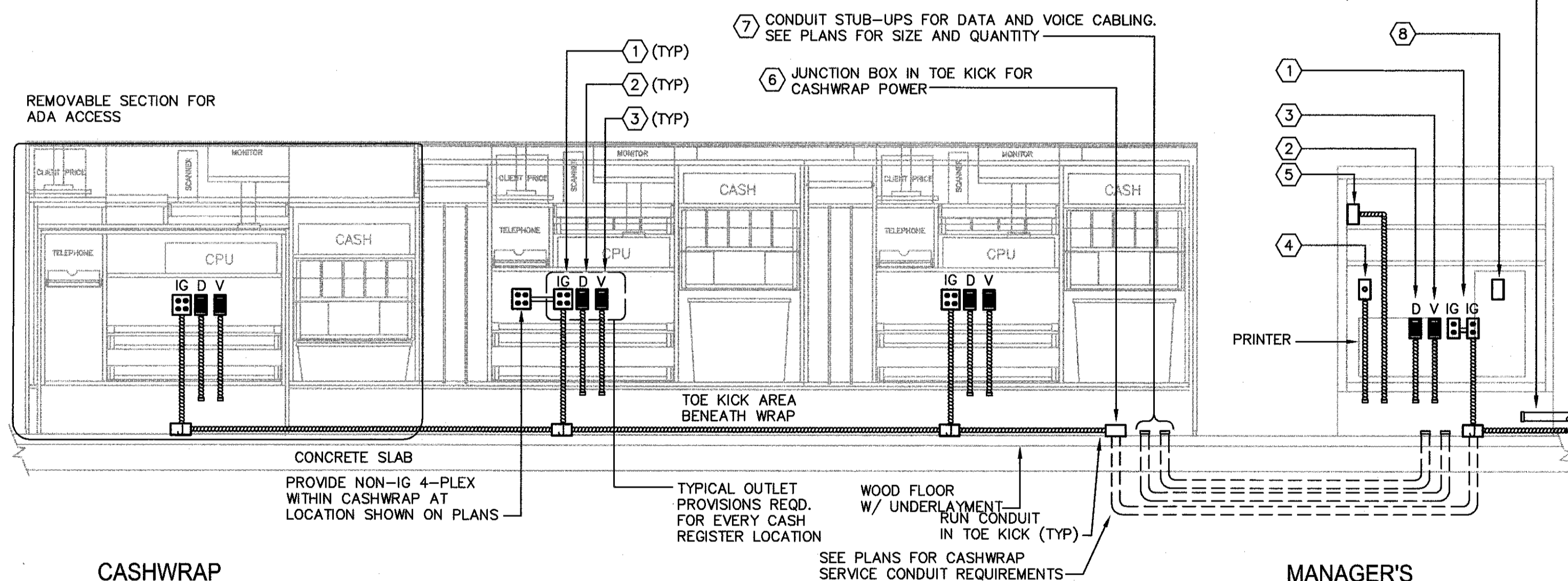
2
NOT TO SCALE

MANAGER'S OFFICE ELEVATION

3
NOT TO SCALE

DETAIL IS DIAGRAMMATIC. ACTUAL QUANTITY OF POS REGISTER LOCATIONS SHOWN ON PLANS MAY DIFFER FROM DETAIL. ELECTRICAL CONTRACTOR SHALL VERIFY QUANTITY OF REGISTER LOCATIONS ON PLAN, AND INSTALL OUTLET AND CONDUIT PROVISIONS AT EACH LOCATION AS ILLUSTRATED ON DETAIL.

FOR LOW VOLTAGE CONDUITS, ELECTRICAL SUB-CONTRACTOR CUT CONDUITS SQUARELY DE-BURR AND PROVIDE INSULATED BUSHING ON EACH CONDUIT END



CASHWRAP

MANAGER'S WORKSTATION

EMPLOYEE COUNTER ELEVATION

6
NOT TO SCALE

ELEVATION NOTES:

- ① ELECTRICAL CONTRACTOR TO PROVIDE 4-PLEX RECEPTACLE WITH ORANGE DEVICE AND COVERPLATE MOUNTED IN MILLWORK. PROVIDE BRANCH CIRCUIT CONCEALED IN MILLWORK FROM OUTLET TO TOE KICK AND TO FLOOR MOUNT JUNCTION BOX BENEATH MILLWORK ACCESS PANEL. PRIOR TO INSTALL, COORDINATE LAYOUT WITH ARCHITECTURAL AND MILLWORK.
- ② ELECTRICAL CONTRACTOR PROVIDE 4" SQUARE OUTLET BOX WITH SINGLE GANG PLASTER RING MOUNTED IN MILLWORK FOR DATA OUTLET LOCATION. PROVIDE 3/4" FLEX. W/PULL STRING FROM OUTLET BOX AND STUBBED TO TOE KICK. RUN CONDUIT NEATLY ATTACHED TO BACK PANEL OF MILLWORK. COORD. WITH MILLWORK CONTRACTOR TO CORE THROUGH BOTTOM PANEL TO TOE KICK FOR CONDUIT STUB-OUT. PROVIDE INSULATED BUSHING AT END OF CONDUIT. PRIOR TO INSTALL, COORDINATE LAYOUT WITH ARCHITECTURAL AND MILLWORK.
- ③ ELECTRICAL CONTRACTOR PROVIDE 4" SQUARE OUTLET BOX WITH SINGLE GANG PLASTER RING MOUNTED IN MILLWORK FOR VOICE OUTLET LOCATION. PROVIDE 3/4" FLEX. W/PULL STRING FROM OUTLET BOX AND STUBBED TO TOE KICK. RUN CONDUIT NEATLY ATTACHED TO BACK PANEL OF MILLWORK. COORD. WITH MILLWORK CONTRACTOR TO CORE THROUGH BOTTOM PANEL TO TOE KICK FOR CONDUIT STUB-OUT. PROVIDE INSULATED BUSHING AT END OF CONDUIT. PRIOR TO INSTALL, COORDINATE LAYOUT WITH ARCHITECTURAL AND MILLWORK.
- ④ ELECTRICAL CONTRACTOR PROVIDE DOOR CHIME MOUNTED IN MILLWORK. PROVIDE 3/4" FLEX. FROM CHIME STUBBED TO TOE KICK. RUN CONDUIT NEATLY ATTACHED TO BACK PANEL OF MILLWORK. COORD. WITH MILLWORK CONTRACTOR TO CORE THROUGH BOTTOM PANEL TO TOE KICK FOR CONDUIT STUB-OUT. PROVIDE INSULATED BUSHING AT END OF CONDUIT. PRIOR TO INSTALL, COORDINATE LAYOUT WITH ARCHITECTURAL AND MILLWORK.

- ⑤ ELECTRICAL CONTRACTOR PROVIDE 2-GANG OUTLET BOX WITH SINGLE GANG PLASTER RING MOUNTED IN MILLWORK FOR SOUND SYSTEM VOLUME CONTROL. PROVIDE 3/4" FLEX. W/PULL STRING FROM OUTLET BOX AND STUBBED TO TOE KICK. RUN CONDUIT NEATLY ATTACHED TO BACK PANEL OF MILLWORK. COORD. WITH MILLWORK CONTRACTOR TO CORE THROUGH BOTTOM PANEL TO TOE KICK FOR CONDUIT STUB-OUT. PROVIDE INSULATED BUSHING AT END OF CONDUIT. PRIOR TO INSTALL, COORDINATE LAYOUT WITH ARCHITECTURAL AND MILLWORK.
- ⑥ PROVIDE FLOOR MOUNTED JUNCTION BOX FOR POWER TO CASH REGISTERS. ELECTRICAL CONTRACTOR SHALL LOCATE JUNCTION BOXES CONCEALED IN CASHWRAP TOE KICK BENEATH THE MILLWORK ACCESS PANEL - COORD. WITH MILLWORK CONTRACTOR FOR EXACT LOCATION.
- ⑦ PROVIDE CONDUIT STUB-IN TO CASHWRAP TOE KICK FOR DATA, VOICE, AND LOW VOLTAGE SERVICES TO WRAP - REFER TO FLOOR PLAN FOR QTY., SIZE, AND ROUTING. ELECTRICAL CONTRACTOR SHALL LOCATE CONDUIT STUB-OUTS CONCEALED IN CASHWRAP TOE KICK TO BENEATH THE MILLWORK ACCESS PANEL - COORD. WITH MILLWORK CONTRACTOR FOR EXACT LOCATION. FOR EACH CONDUIT STUB-OUT PROVIDE AN INSULATED BUSHING ON END. FOR STUB-UPS FROM FLOOR, CONDUIT END SHALL BE NO MORE THAN 1" AFF. ELEC. CONTRACTOR SHALL PROVIDE HEAVY GAUGE PULL STRING IN DATA/VOICE CONDUITS TO CASHWRAP.
- ⑧ AIPHONE AUDIO ONLY OUTLET.

TYPICAL CASHWRAP AND MANAGERS WORKSTATION COUNTER ELEVATION

4
NOT TO SCALE

OWNER: **WILLIAMS-SONOMA, INC.**
3250 Van Ness Avenue
San Francisco, CA 94109
T 415 616 8602
F 415 439 8164
www.williams-sonoma.com

EEA
EEA Consulting Engineers
6615 Vaughn Ranch Road, Suite 200
Austin, Texas 78730-2314 USA
512.744.4400 main 512.744.4444 fax
www.eeace.com
State of Registration MAINE
Firm Registration No. N/A
EEA Project No. 20166538

Michael N. Hart
No. 10507
LICENSED PROFESSIONAL ENGINEER
ME 2222

west elm
Downtown Portland
164 Middle Street
Portland, ME 04101
PROJECT #006-160335.00

ISSUED / REVISED	DATE
PRELIMINARY SET	09/08/16
LL COORDINATION SET	11/08/16
LL/PERMIT SET	11/21/16

ELECTRICAL DETAILS
E-201